

# WHENDY HOUSE

**WHENDY** could be the best band in the world.  
Unfortunately their practices are always interrupted by their  
dragon landlord and uninvited guests of the **WHENDY HOUSE**.

# premise

**BUG**, **GOOSE** and **NEWT** are a band called **WHENDY**. They rehearse in a **WHENDY HOUSE** owned by their dragon landlord **SLAY**. Though they try, their rehearsals are always interrupted by something - or often someone.

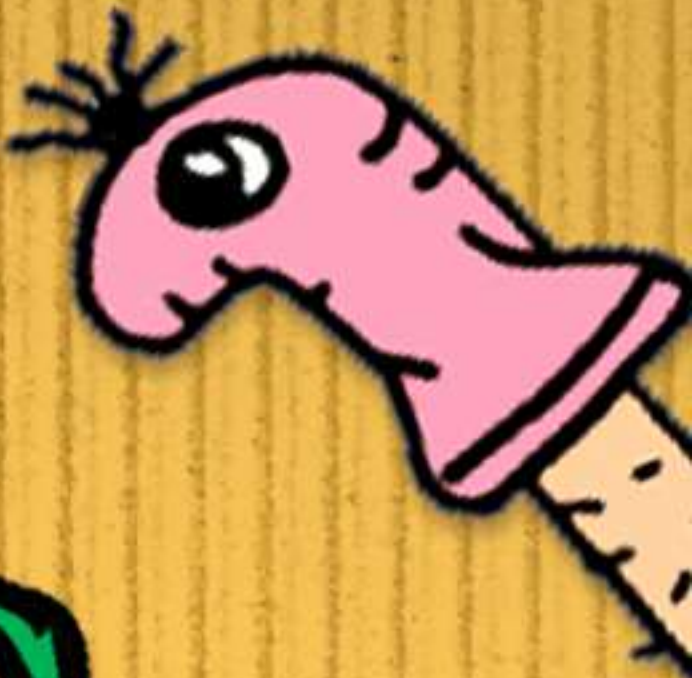
In the pilot, **SLAY** rents out the garden to a nefarious **RECORD COMPANY EXECUTIVE**, who controls a machine that churns out toxic fumes and viral hits. **BUG** fights to stop the **RECORD COMPANY EXECUTIVE**, **GOOSE** goes on a fume-fuelled fever dream of self revaluation and **NEWT** is indoctrinated into a plot to destroy the machine by a nu-metal Korncob.

SONGS IN THE PILOT EPISODE



WAKE UP WAKE UP WAKE UP	2:02
EAT CAKE	1:37
WASHING UP	2:36
EAT IN TONIGHT	2:26

SCAN OR CLICK [HERE](#) TO LISTEN TO THE MUSIC

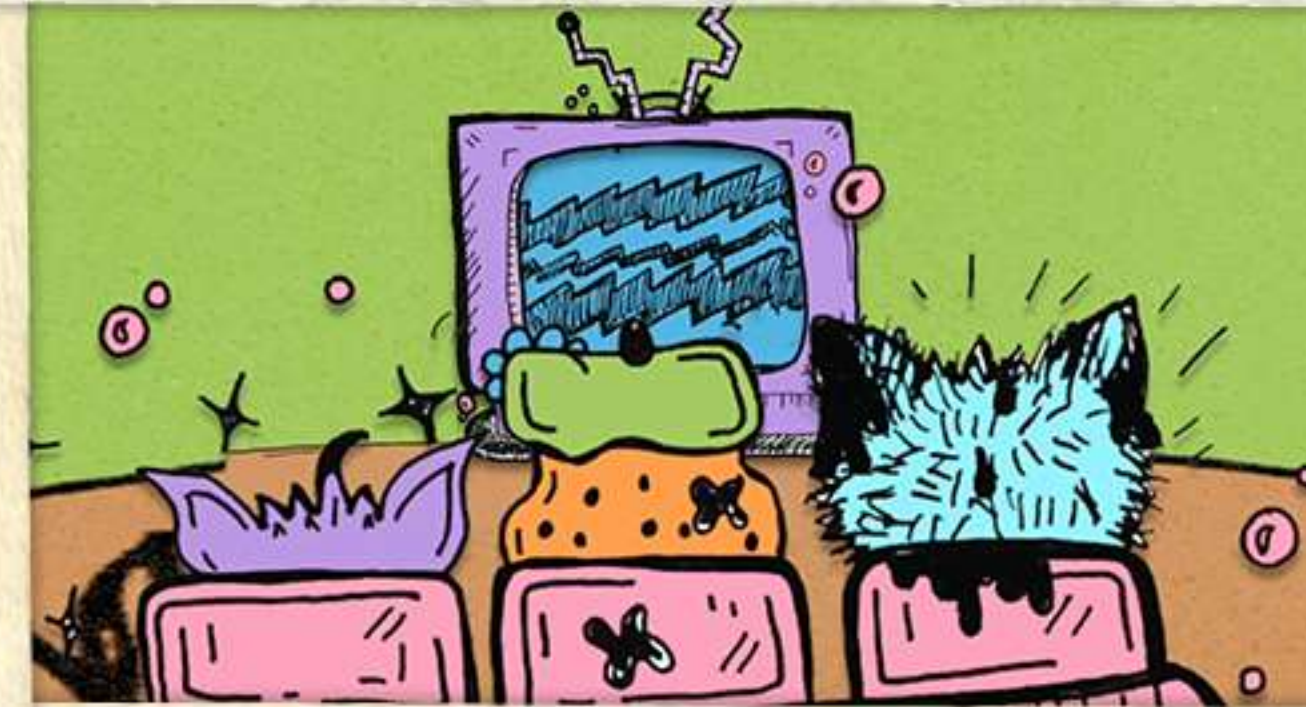
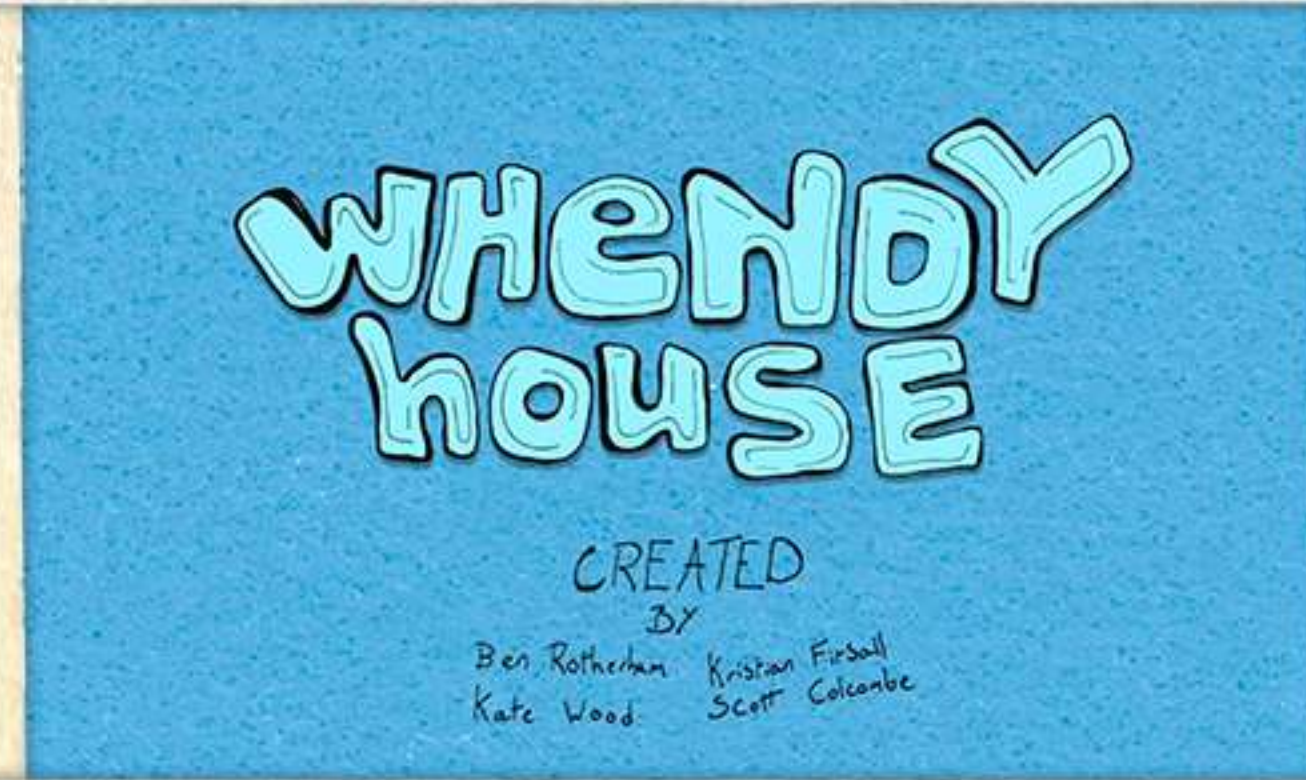


# storyboard

We've whipped up an animated storyboard of the opening scene to our pilot.

Take a glimpse into the world of **WHENDY HOUSE**. With your support we can bring this vision to life.

Scan or click [here](#) to watch the storyboard!





# the whendy house

In the heart of a magical garden, there stands a **WHENDY HOUSE**, the favorite gathering place for a peculiarly talented band of musical creatures.

Although it appears small from the outside, the surrealist interior of crooked furniture and fuzzy textures are painted in shades of pale lavender, delicate lemon, and hints of dusty rose. The floor-plan expands and contorts according to the needs of it's occupants.

The house is owned and rented out by a dragon named **SLAY** who lives in an outhouse on the property. They like to keep a close eye on whoever occupies their **WHENDY HOUSE**.

# interior

## REHERSAL SPACE

- Homemade instruments
- Wonky furniture
- Window to the garden (regularly used by **SLAY**)

## KITCHEN

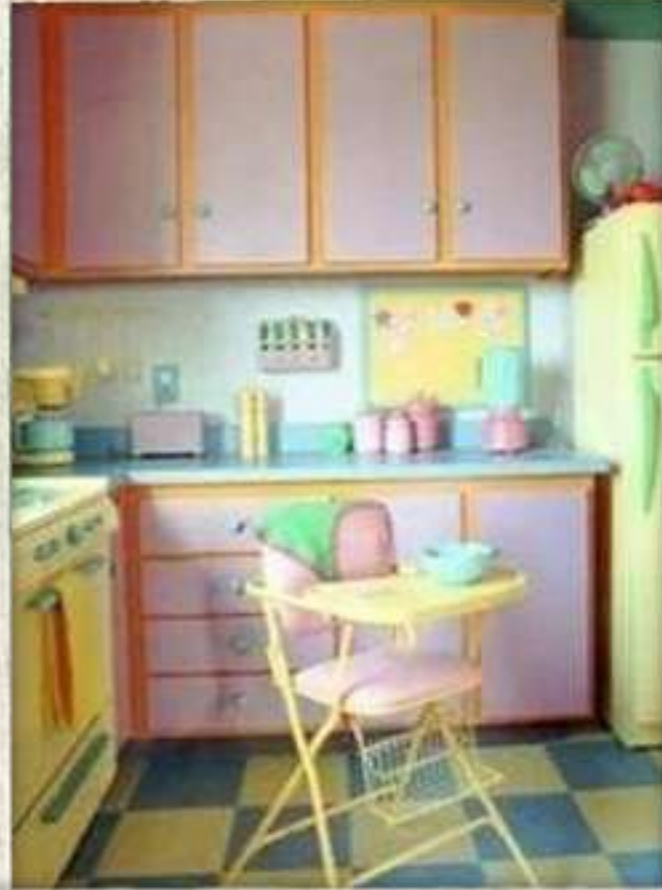
- Odd, toylike appliances
- Neverending washing up

## LIVING ROOM

- CRT TV
- House phone
- Cuccoo Clock



# interior



# exterior



characters





b  
u  
g



A captivating blend of monster and moth, BUG appears emotionally distant - using a blunt exterior to mask her vulnerability and deep desire to connect with the world. Bug's eccentricities and antiquated use of language often leave her misunderstood in social situations.

She's suspicious of strangers, but fiercely loyal to her friends, breaking her nocturnal sleeping pattern to keep up with the band's chaotic daytime routine.

Bug's innate connection to the moon gives her a psychic intuition that she is yet to understand.

n ewt



**NEWT** is a perpetually anxious and hyperactive amphibian. He's a whirlwind of energy, always striving to make others happy, which frequently leads him blindly into awkward situations.

As the most innocent member of the group, **NEWT**'s vulnerability to manipulation is starkly evident, particularly in the clutches of the cunning and sly **SLAY**.

**NEWT**'s sincerity and eagerness are endearing, but often land him in bizarre predicaments.



goose

**GOOSE** is a frazzled feline with an identity crisis. His chilled-out, easy-going disposition frequently blurs the line between mellow and ambivalent.

His loose grip on reality often leads him to overlook crucial events and plot developments, but his pure intentions keep him falling upwards.

**GOOSE** is a gifted and generous cook, regularly dishing out delectable treats to his bandmates and Whendy House guests. But is this all a distraction from his inner-turmoil?

# Slay



**SLAY** is the camp and materialistic dragon/landlord of the **WHENDY HOUSE** who wields a mysterious influence over the band's fate. **SLAY**'s alluring persona conceals their cunning sense of greed.

Behind closed doors and **WHENDY HOUSE** floors, **SLAY**'s diabolical intentions will eventually come to light.

What's hiding beneath the surface?

# sock puppet choir

A dusty choir  
infestation made of an  
eccentric group of tiny mites.  
These pint-sized performers  
harmonize whenever **WHENDY** perform.



# potential collaborators



MICHAEL CERA



TIERRA WHACK



THUNDERCAT



MAE MARTIN



HEMLOCKE SPRINGS



ALI WONG



CLAUD



JASON SEGAL



ERIC ANDRE



DORA JAR



KOJEY RADICAL



BOY GENIUS



JAMES ACASTER



DANNY BROWN



BREWDOG

audible



FLYING TIGER  
COPENHAGEN

UNIQLO

GOLF

PIZZA  
HOODLAs

KODAK

# potential partners



LAZY OAF

SNICKERS



KICKERS



HOUSEPLANT



# promo

## **SOCIALS**

- Clips from the show
- Behind the scenes (e.g. puppet and show creation, production, etc.)
- Participating in trends as the puppets
- Interviews with guests and the team
- Music videos and live sessions

## **LIVE**

- Touring as part of promotion for the show (UK, EU & US)
- Integrating projection mapping into live shows

## **MERCHANDISE**

- Vinyl, CDs and Cassette
- Drop-shipping apparel
- Brand deals and collaborations



for fans of



GORILLAZ

FANTASTIC  
MR. FOX

tUnE - yArDs

FLIGHT OF THE  
CONCHORDS

[adult swim]

KERO KERO  
BONITO

# writer-director vision

Somewhere in between the sincere sweetness of Jim Henson's Sesame Street, and the anarchic chaos of Adult Swim, is: **WHENDY HOUSE**.

Our bold but comforting aesthetic will allow us to explore darker topics with a sense of fun and, despite an irreverent sense of humour, empathy.

Rather than being a parody of the children's shows that inspire it, Whendy House is a love letter to them. Understanding that, whilst friendship, music and imagination can't solve all the world's problems (or help pay rent), they can make it brighter.



SMALLHD



Scan or click [here](#)

**KRISTIAN FITSALL** is a London-based filmmaker who, as well as having written and directed multiple award-winning short films, has created music videos for a multitude of artists including members of Whendy. Kristian is currently in post-production on a dark-comedy short starring Count Abulla's **MANPREET BAMBRA** and Dear England's **WILL CLOSE**.



### ABOUT US

“After years of dedicating our lives to music, unable to create free of judgment, we became self-induced prisoners to perfectionism. That got old and so did we.”

— Katie  
Ben Scott

(AKA)  
Whendy

# the band

**BEN, KATIE** and **SCOTT** are best friends, housemates and multi-disciplinary artists. Together they navigate a haphazard path through the chaotic world of **WHENDY**.

**PREVIOUSLY FEATURED ON:** BBC Radio 1, Billboard, MTV, Paper Magazine, DIY, Earmilk, Spotify & Apple Music Editorial and much, much more.

*"Never is an awfully long time."*

**- WENDY MOIRA ANGELA DARLING**